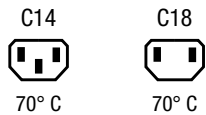


IEC appliance inlet C14 or C18, sandwich mounting, PCB-/solder terminal



Snap-in mounting

Screw-on mounting

**Description**

- Panel Mount:
 - Snap-in or screw-on mounting on PCB, sandwich or rear-side
- Inlet, Pin temperature 70 °C, protection class I or II
- For PCB mounting

Approvals

- VDE License Number: 40012767
- UL License Number: E96454
- CSA License Number: 38456

Other versions on request

- With solder terminals

Weblinks

[Approvals](#), [RoHS](#), [CHINA-RoHS](#), [e-Store](#), [SCHURTER-Stock-Check](#), [Distributor-Stock-Check](#)

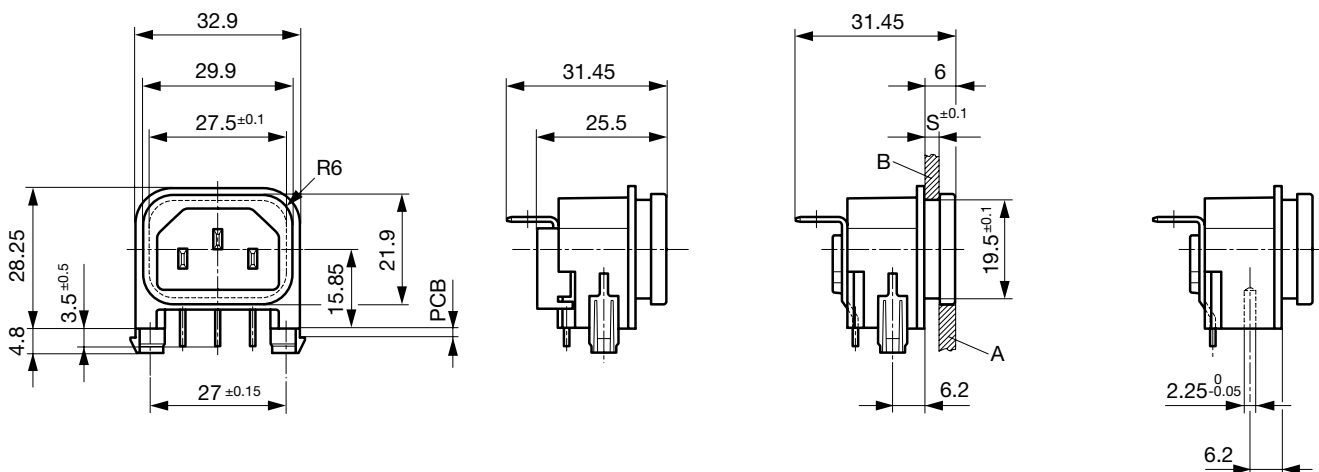
Technical Data

Ratings IEC	10A / 250VAC; 50Hz
Ratings UL/CSA	15A / 250VAC; 60Hz
Dielectric Strength	> 3kVAC between L-N > 3kVAC between L/N-PE (1 min/50Hz)
Allowable Operation Temp.	-25 °C to 70 °C
Degree of Protection	from front side IP 40 acc. to IEC 60529
Protection Class	Suitable for appliances with protection class I or II acc. to IEC 61140
Terminal	For PCB mounting ; Ground terminal: angled to pin axis Solder terminal on request
Panel Thickness s	Sandwich/rear-side: 1.5/2/2.5/3 mm
Material: Housing	Thermoplastic, black, UL 94V-0

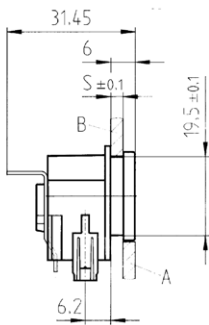
Appliance-Inlet/-Outlet	C14/C18 acc. to IEC/EN 60320-1, UL 498, CSA C22.2 no. 42 (for cold conditions) pin-temperature 70 °C, 10A, Protection class I or II
-------------------------	---

Dimensions

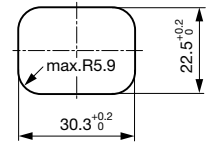
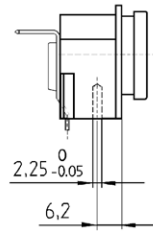
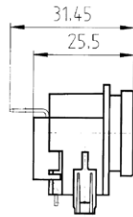
Length |-----| 32.9 mm



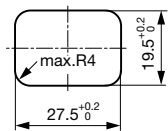
Screw-on mounting



with insulation cover



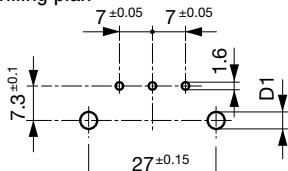
Rear panel mounting



Split panel mounting
(Sandwich)

Drilling diagrams

Drilling plan



d1 = 6 ± 0.05 for Snap-in mounting
d1 = 3.6 ± 0.05 for screw-on mounting
with self-tapping screws
3 mm (EJOT-PT), 2 screws enclosed

Variants

[Distributor-Stock-Check](#) | [SCHURTER-Stock-Check](#) | [e-Store](#)

Protection Class	Panel mounting	Panel Thickness s [mm]	Ground terminal 4.8 x 0.8 mm	Cover	Order Number
I	Snap-in	-	angled to pin axis		GSP2.9213.15
I	Snap-in	1	angled to pin axis		GSP2.9203.11
I	Snap-in	1.2	angled to pin axis		GSP2.9203.12
I	Snap-in	1.5	angled to pin axis		GSP2.9203.13
I	Snap-in	2	angled to pin axis		GSP2.9203.14
I	Snap-in	2.5	angled to pin axis		GSP2.9203.15
I	Snap-in	3	angled to pin axis		GSP2.9203.16
I	Snap-in	1.5	angled to pin axis	●	GSP2.9213.13
I	Snap-in	2	angled to pin axis	●	GSP2.9213.14
I	Snap-in	3	angled to pin axis	●	GSP2.9213.16
I	Screw-on	1	angled to pin axis		GSP2.9103.11
I	Screw-on	1.5	angled to pin axis		GSP2.9103.13
I	Screw-on	2	angled to pin axis		GSP2.9103.14
I	Screw-on	2.5	angled to pin axis		GSP2.9103.15
I	Screw-on	3	angled to pin axis		GSP2.9103.16

Protection Class	Panel mounting	Panel Thicknesses [mm]	Ground terminal 4.8 x 0.8 mm	Cover	Order Number
I	Screw-on	1.5	angled to pin axis	●	GSP2.9113.13
I	Screw-on	2	angled to pin axis	●	GSP2.9113.14
I	Screw-on	2.5	angled to pin axis	●	GSP2.9113.15
I	Screw-on	3	angled to pin axis	●	GSP2.9113.16
II	Snap-in	1.5	straight		GSP2.9200.13
II	Snap-in	2.5	straight		GSP2.9200.15
II	Snap-in	1.5	straight	●	GSP2.9210.13
II	Snap-in	2	straight	●	GSP2.9210.14
II	Snap-in	2.5	straight	●	GSP2.9210.15
II	Snap-in	3	straight	●	GSP2.9210.16
II	Screw-on	1.5	straight		GSP2.9100.13
II	Screw-on	3	straight		GSP2.9100.16
II	Screw-on	2	straight	●	GSP2.9110.14
II	Screw-on	2.5	straight	●	GSP2.9110.15

Additional version on request, e.g.: Ground terminal straight or quick-connect terminal 6,3 x 0,8 mm

Packaging unit 50 Pcs